

**CGEWHO – CHENNAI PHASE-III  
PROJECT**



**MONTHLY PROGRESS REPORT**

**STATUS AS ON : 31.10.2024**

**PROGRESS REPORT**  
**CGEWHO – CHENNAI PHASE-III PROJECT**

31.10.2024

BLOCK	STATUS AS ON 31 <sup>st</sup> OCTOBER-2024
A1 BLOCK	<p>◆ <b>100% Completed Works</b></p> <ul style="list-style-type: none"> <li>▪ Terrace floor level slab R.C.C</li> <li>▪ Terrace floor Parapet Columns Concrete.</li> <li>▪ Lift Head room (4 out of 4) - Slab Concrete.</li> <li>▪ Over Head Water Tank               <ul style="list-style-type: none"> <li>(a) Base Slab Concrete 2 out of 2</li> <li>(b) Tank Wall Concrete 2 out of 2</li> <li>(c) Top Cover slab Concrete 2 out of 2</li> </ul> </li> <li>▪ Block work upto Tenth floor &amp; Parapet wall.</li> <li>▪ Ceiling Plastering upto Tenth floor.</li> <li>▪ Wall plastering upto Tenth floor.</li> <li>▪ 1<sup>st</sup> Coat Wall Putty upto Tenth floor</li> <li>▪ Electrical Conducting works in Tenth floor.</li> <li>▪ Fixing of Water supply pipe Lines (CPVC).</li> <li>▪ Fixing of Sanitary Lines (PVC).</li> <li>▪ External Plastering 100% completed in all sides.</li> <li>▪ Fixing of Vertical Plumbing Lines in Shaft.</li> <li>▪ Fixing of Bathroom Wall Tiles 100% completed (200/200)</li> <li>▪ Fixing of Toilet Wall Tiles 100% completed (200/200)</li> <li>▪ Laying Of Floor Tiles               <ul style="list-style-type: none"> <li>a) Ceramic Tiles in Bathrooms 100% completed (200/200)</li> <li>b) Ceramic Tiles in Toilets 100% completed (200/200)</li> </ul> </li> <li>▪ Vitrified Tiles in Halls &amp; Bedrooms 100% completed (200/200).</li> <li>▪ Fixing of UPVC Windows &amp; Ventilators 100% completed ( 800 /800 ).</li> <li>▪ Fixing of Door Shutters 100% completed (1200/1200).</li> <li>▪ Kitchen Finishing Works               <ul style="list-style-type: none"> <li>a) Fixing of Wall Dados 100% completed (200/200).</li> <li>b) Laying of Granite Countertop 100% completed (200/200).</li> <li>c) Fixing of S.S Sink 100% completed (200/200)</li> </ul> </li> <li>▪ Water Proofing Works.               <ul style="list-style-type: none"> <li>a) Over Head Water Tank 100% completed ( 2 / 2).</li> <li>b) Terrace Water Proofing Work 100% completed.</li> </ul> </li> <li>▪ Laying of Green marble for Staircase 100% completed.</li> <li>▪ Electrical wire pulling work 100% completed (200/200).</li> <li>▪ Fixing of Modular Switches &amp; Sockets 100% completed. (200/200)</li> </ul>



**PROGRESS REPORT**  
**CGEWHO – CHENNAI PHASE-III PROJECT**

	<ul style="list-style-type: none"> <li>▪ Fixing of Window Safety Grills 100% completed. (800 / 800).</li> <li>▪ Bathroom &amp; Toilet False ceiling work 100% completed.</li> <li>▪ Fixing of IWC 100% completed (200/200)</li> <li>▪ Internal Painting               <ul style="list-style-type: none"> <li>a) 1<sup>st</sup> Coat – 100% completed (200/200)</li> </ul> </li> <li>▪ Stilt floor – Grano flooring work completed.</li> <li>▪ Fixing of Door Hardware fittings.</li> <li>▪ Electrical Panel &amp; Cable tray fixing works completed.</li> </ul>	
	<b>WORKS ON PROGRESS</b>	<b>WORKS TO BE DONE</b>
	<ul style="list-style-type: none"> <li>▪ Balcony Handrail painting works</li> <li>▪ Staircase Handrail finishing works</li> <li>▪ Over Head Tank Ring Main connection works.</li> <li>▪ Lift Erection works (Total 4 Lifts)               <ul style="list-style-type: none"> <li>a) Lift 1 - 70% completed.</li> <li>b) Lift 2 - 70% completed.</li> <li>c) Lift 3 – 70% completed.</li> <li>d) Lift 4 – Frame fixing works on progress.</li> </ul> </li> <li>▪ Fire fighting works 90% completed.</li> <li>▪ Lift Cladding work 50% completed</li> </ul>	<ul style="list-style-type: none"> <li>▪ Fixing of Wash basins</li> <li>▪ Fixing of Plumbing CP fittings.</li> <li>▪ Fixing of Main Door lock.</li> <li>▪ Internal Painting 2<sup>nd</sup> Coating</li> <li>▪ Lift Commissioning works.</li> <li>▪ Fixing of EB meters.</li> <li>▪ Fixing of Electrical fittings in common areas.</li> </ul>



**PROGRESS REPORT**  
**CGEWHO – CHENNAI PHASE-III PROJECT**

BLOCK	STATUS AS ON 31 <sup>st</sup> OCTOBER-2024
A2 BLOCK	<p>◆ <b>100% Completed Works</b></p> <ul style="list-style-type: none"> <li>▪ Terrace floor level slab R.C.C</li> <li>▪ Terrace floor Parapet Columns Concrete.</li> <li>▪ Lift Head room (4 out of 4) - Slab Concrete.</li> <li>▪ Over Head Water Tank               <ul style="list-style-type: none"> <li>(a) Base Slab Concrete 2 out of 2</li> <li>(b) Tank Wall Concrete 2 out of 2</li> <li>(c) Top Cover slab Concrete 2 out of 2</li> </ul> </li> <li>▪ Block work upto Tenth floor &amp; Parapet wall.</li> <li>▪ Ceiling Plastering upto Tenth floor.</li> <li>▪ Wall plastering upto Tenth floor.</li> <li>▪ 1<sup>st</sup> Coat Wall Putty upto Tenth floor</li> <li>▪ Electrical Conducting works in Tenth floor.</li> <li>▪ Fixing of Water supply pipe Lines (CPVC).</li> <li>▪ Fixing of Sanitary Lines (PVC).</li> <li>▪ External Plastering 100% completed in all sides.</li> <li>▪ Fixing of Vertical Plumbing Lines in Shaft.</li> <li>▪ Fixing of Bathroom Wall Tiles 100% completed (200/200)</li> <li>▪ Fixing of Toilet Wall Tiles 100% completed (200/200)</li> <li>▪ Laying Of Floor Tiles               <ul style="list-style-type: none"> <li>a) Ceramic Tiles in Bathrooms 100% completed (200/200)</li> <li>b) Ceramic Tiles in Toilets 100% completed (200/200)</li> </ul> </li> <li>▪ Vitrified Tiles in Halls &amp; Bedrooms 100% completed (200/200).</li> <li>▪ Fixing of UPVC Windows &amp; Ventilators 100% completed ( 800 /800 ).</li> <li>▪ Fixing of Door Shutters 100% completed (1200/1200).</li> <li>▪ Kitchen Finishing Works               <ul style="list-style-type: none"> <li>a) Fixing of Wall Dados 100% completed (200/200).</li> <li>b) Laying of Granite Countertop 100% completed (200/200).</li> <li>c) Fixing of S.S Sink 100% completed (200/200)</li> </ul> </li> <li>▪ Water Proofing Works.               <ul style="list-style-type: none"> <li>a) Over Head Water Tank 100% completed ( 2 / 2).</li> <li>b) Terrace Water Proofing Work 100% completed.</li> </ul> </li> <li>▪ Laying of Green marble for Staircase 100% completed.</li> <li>▪ Electrical wire pulling work 100% completed (200/200).</li> <li>▪ Fixing of Modular Switches &amp; Sockets 100% completed. (200/200)</li> <li>▪ Bathroom &amp; Toilet False ceiling work 100% completed.</li> </ul>



**PROGRESS REPORT**  
**CGEWHO – CHENNAI PHASE-III PROJECT**

	<ul style="list-style-type: none"> <li>▪ Fixing of IWC 100% completed (200/200)</li> <li>▪ Internal Painting               <ul style="list-style-type: none"> <li>a) 1<sup>st</sup> Coat – 100% completed (200/200)</li> </ul> </li> <li>▪ Stilt floor – Grano flooring work completed.</li> <li>▪ Fixing of Door Hardware fittings.</li> <li>▪ Electrical Panel &amp; Cable tray fixing works completed.</li> </ul>	
	<b>WORKS ON PROGRESS</b>	<b>WORKS TO BE DONE</b>
	<ul style="list-style-type: none"> <li>▪ Fixing of Window Safety Grills 90% completed. (720 / 800).</li> <li>▪ Balcony Handrail painting works</li> <li>▪ Staircase Handrail finishing works</li> <li>▪ Over Head Tank Ring Main connection works.</li> <li>▪ Lift Erection works (Total 4 Lifts)               <ul style="list-style-type: none"> <li>a) Lift 1 - 70% completed.</li> <li>b) Lift 2 - 70% completed.</li> <li>c) Lift 3 – 70% completed.</li> <li>d) Lift 4 – Frame fixing works on progress.</li> </ul> </li> <li>▪ Fire fighting works 90% completed.</li> <li>▪ Lift Cladding work 50% completed</li> </ul>	<ul style="list-style-type: none"> <li>▪ Fixing of Wash basins</li> <li>▪ Fixing of Plumbing CP fittings.</li> <li>▪ Fixing of Main Door lock.</li> <li>▪ Internal Painting 2<sup>nd</sup> Coating</li> <li>▪ Lift Commissioning works.</li> <li>▪ Fixing of EB meters.</li> <li>▪ Fixing of Electrical fittings in common areas.</li> </ul>



**PROGRESS REPORT**  
**CGEWHO – CHENNAI PHASE-III PROJECT**

BLOCK	STATUS AS ON 31 <sup>st</sup> OCTOBER-2024
B1 BLOCK	<ul style="list-style-type: none"> <li>◆ <b>100% Completed Works</b> <ul style="list-style-type: none"> <li>▪ Terrace floor level slab R.C.C</li> <li>▪ Terrace floor Parapet Columns Concrete.</li> <li>▪ Lift Head room (3 out of 3) - Slab Concrete.</li> <li>▪ Over Head Water Tank                             <ul style="list-style-type: none"> <li>(a) Base Slab Concrete (3 out of 3)</li> <li>(b) Wall Concrete (3 out of 3)</li> <li>(c) Top Cover slab (3 out of 3 )</li> </ul> </li> <li>▪ Block work upto Tenth floor &amp; Parapet wall.</li> <li>▪ Ceiling Plastering upto Tenth floor.</li> <li>▪ Wall plastering upto Tenth floor.</li> <li>▪ 1<sup>st</sup> Coat Wall Putty upto Tenth floor.</li> <li>▪ 2<sup>nd</sup> Coat Wall Putty upto Tenth floor.</li> <li>▪ Fixing of Internal Plumbing Line                             <ul style="list-style-type: none"> <li>a) Water supply pipe Lines (CPVC).</li> <li>b) Sanitary Lines (PVC)</li> </ul> </li> <li>▪ External Plastering in all sides.</li> <li>▪ Fixing of Vertical Plumbing Line in Shafts                             <ul style="list-style-type: none"> <li>a) Water supply pipe Lines (G.I).</li> <li>b) Sanitary Lines (PVC).</li> </ul> </li> <li>▪ Fixing of Bathroom Wall Tiles.</li> <li>▪ Laying Of Floor Tiles                             <ul style="list-style-type: none"> <li>a) Ceramic Tiles in Bathroom</li> <li>b) Vitrified Tiles in Halls &amp; Bedrooms.</li> <li>c) Vitrified Tiles in Corridor.</li> </ul> </li> <li>▪ Fixing of UPVC Windows.</li> <li>▪ Fixing of UPVC French Door (without Mosquito mesh shutter)</li> <li>▪ Fixing of Door Shutters 100% completed (840/840).</li> <li>▪ Kitchen Finishing Works                             <ul style="list-style-type: none"> <li>a) Fixing of Wall Dados.</li> <li>b) Laying of Granite Countertop.</li> <li>c) Fixing of S.S Sink.</li> </ul> </li> <li>▪ Water Proofing Works.                             <ul style="list-style-type: none"> <li>a) Terrace floor Water proofing.</li> <li>b) Over Head Water Tank.</li> </ul> </li> <li>▪ Laying of Green marble for Staircase 100% completed.</li> <li>▪ Electrical wire pulling work 100% completed (120/120).</li> <li>▪ Fixing of Modular Switches &amp; Sockets 100% completed. (120/120)</li> </ul> </li> </ul>



**PROGRESS REPORT**  
**CGEWHO – CHENNAI PHASE-III PROJECT**

B1 BLOCK	<ul style="list-style-type: none"> <li>▪ Fixing of M.S Window Safety Grills 100% completed.</li> <li>▪ Fixing of Balcony Handrail.</li> <li>▪ Fixing of Staircase Hand Rails.</li> <li>▪ Bathroom false ceiling work 100% completed ( 240 / 240 ).</li> <li>▪ Fixing of IWC 100% completed (120/120)</li> <li>▪ Fixing of EWC 100% completed (120/120)</li> <li>▪ Lift Cladding works 3 out of 3 100% completed.</li> <li>▪ Internal Painting               <ul style="list-style-type: none"> <li>a) 1<sup>st</sup> Coat – 100% completed (120/120)</li> </ul> </li> <li>▪ Over Head Tank Ring Main Connection works 100% completed.</li> <li>▪ Application of Exterior Wall Primer</li> <li>▪ Electrical Panel &amp; cable tray fixing works completed.</li> <li>▪ Construction of Earth Pit chambers completed.</li> <li>▪ Fixing of Door Hardware fittings.</li> </ul>	
	<b>WORKS ON PROGRESS</b>	<b>WORKS TO BE DONE</b>
	<ul style="list-style-type: none"> <li>▪ Lift Installation works 90% completed. ( 3 out 3 ).</li> <li>▪ Firefighting works 95% completed.</li> <li>▪ Over Head Tank Ring Main final connection works.</li> <li>▪ External Painting- Damp proof elasto paint               <ul style="list-style-type: none"> <li>a) South side - 90% completed.</li> <li>b) West side - 90% completed.</li> </ul> </li> <li>▪ Stilt Grano flooring – Laying of PCC completed.</li> <li>▪ Fixing of Main Door lock 50% completed ( 60 / 120 )</li> </ul>	<ul style="list-style-type: none"> <li>▪ Fixing of Wash basins</li> <li>▪ Fixing of Plumbing CP fittings.</li> <li>▪ Internal Painting 2<sup>nd</sup> Coating</li> <li>▪ Lift Commissioning works.</li> <li>▪ Fixing of EB meters.</li> <li>▪ Fixing of Electrical fittings in common areas.</li> </ul>



**PROGRESS REPORT**  
**CGEWHO – CHENNAI PHASE-III PROJECT**

BLOCK	STATUS AS ON 31 <sup>st</sup> OCTOBER-2024	
B2 BLOCK	<ul style="list-style-type: none"> <li>◆ <b>100% Completed Works</b> <ul style="list-style-type: none"> <li>▪ Terrace floor level slab R.C.C</li> <li>▪ Terrace floor Parapet Columns Concrete.</li> <li>▪ Lift Head room (3 out of 3) - Slab Concrete.</li> <li>▪ Over Head Water Tank                             <ul style="list-style-type: none"> <li>(a) Base Slab Concrete (3 out of 3)</li> <li>(b) Wall Concrete (3 out of 3)</li> <li>(c) Top Cover slab (3 out of 3 )</li> </ul> </li> <li>▪ Block work upto Tenth floor &amp; Parapet wall.</li> <li>▪ Ceiling Plastering upto Tenth floor.</li> <li>▪ Wall plastering upto Tenth floor.</li> <li>▪ 1<sup>st</sup> Coat Wall Putty upto Tenth floor.</li> <li>▪ Fixing of Internal Plumbing Line                             <ul style="list-style-type: none"> <li>a) Water supply pipe Lines (CPVC).</li> <li>b) Sanitary Lines (PVC)</li> </ul> </li> <li>▪ Fixing of Vertical Plumbing Line in Shafts                             <ul style="list-style-type: none"> <li>a) Water supply pipe Lines (G.I).</li> <li>b) Sanitary Lines (PVC).</li> </ul> </li> <li>▪ Water Proofing Works.                             <ul style="list-style-type: none"> <li>a) Over Head Water Tank.</li> </ul> </li> </ul> </li> </ul>	
	WORKS ON PROGRESS	WORKS TO BE DONE
	<ul style="list-style-type: none"> <li>▪ 2<sup>nd</sup> Coat Wall Putty completed upto First floor (12 / 120).</li> <li>▪ External Plastering 90% completed.</li> <li>▪ Fixing of Bathroom Wall Tiles 83% completed ( 200 / 240).</li> <li>▪ Laying Of Floor Tiles                             <ul style="list-style-type: none"> <li>a) Ceramic Tiles in Bathroom 83% completed ( 200 / 240).</li> <li>b) Vitrified Tiles in Halls &amp; Bedrooms 83% completed (100/120)</li> </ul> </li> <li>▪ Fixing of UPVC Windows 58% completed. (280/480).</li> <li>▪ Fixing of UPVC French Doors started (10/240).</li> </ul>	<ul style="list-style-type: none"> <li>▪ Lift Installation works ( Lift Materials received - 3 out of 3 ).</li> <li>▪ Fixing of Kitchen wall Dados.</li> <li>▪ Fixing of S.S Sink.</li> <li>▪ Lift Cladding works.</li> <li>▪ Laying of Staircase Green marble.</li> <li>▪ Internal Electrification works                             <ul style="list-style-type: none"> <li>a) Electrical wire pulling work.</li> <li>b) Fixing of Modular Switches &amp; Sockets.</li> </ul> </li> <li>▪ Fixing of Window safety grills (Fabrication on process)</li> <li>▪ Bathroom false ceiling work.</li> <li>▪ Overhead Tank -Ring main works</li> <li>▪ Fixing of EWC</li> </ul>





**PROGRESS REPORT**  
**CGEWHO – CHENNAI PHASE-III PROJECT**

	<ul style="list-style-type: none"> <li>▪ Fixing of Flush door shutters 83% completed ( 700 / 840 )</li> <li>▪ Kitchen Finishing Works               <ul style="list-style-type: none"> <li>a) Laying of Granite Countertop 66% completed (80 / 120 ).</li> </ul> </li> <li>▪ Terrace Water Proofing works 15% completed.</li> <li>▪ Firefighting works 20% completed.</li> </ul>	<ul style="list-style-type: none"> <li>▪ Fixing of Wash basins.</li> <li>▪ Stilt Grano flooring</li> <li>▪ Fixing of Door Hardware fittings.</li> <li>▪ Fixing of Main Door lock</li> <li>▪ Fixing of Plumbing CP fittings.</li> <li>▪ Internal Painting 2<sup>nd</sup> Coating</li> <li>▪ Lift Commissioning works.</li> <li>▪ Fixing of EB meters.</li> <li>▪ Fixing of Electrical fittings in common areas.</li> </ul>
<b>BLOCK</b>	<b>STATUS AS ON 31<sup>st</sup> OCTOBER-2024</b>	
C1 BLOCK	<ul style="list-style-type: none"> <li>◆ <b>100% Completed Works</b> <ul style="list-style-type: none"> <li>▪ <b>Terrace floor level</b> slab R.C.C</li> <li>▪ Terrace floor Parapet Columns Concrete.</li> <li>▪ Lift Head room (4 out of 4) - Slab Concrete.</li> <li>▪ Over Head Water Tank               <ul style="list-style-type: none"> <li>(a) Base Slab Concrete (3 out of 3)</li> <li>(b) Wall Concrete (3 out of 3)</li> <li>(c) Top Cover slab (3 out of 3 )</li> </ul> </li> <li>▪ Block work upto Tenth floor &amp; Parapet wall.</li> <li>▪ Ceiling Plastering upto Tenth floor.</li> <li>▪ Wall plastering upto Tenth floor.</li> <li>▪ 1<sup>st</sup> Coat Wall Putty upto Tenth floor.</li> <li>▪ 2<sup>nd</sup> Coat Wall Putty upto Tenth floor.</li> <li>▪ Fixing of Internal Plumbing Line               <ul style="list-style-type: none"> <li>a) Water supply pipe Lines (CPVC).</li> <li>b) Sanitary Lines (PVC)</li> </ul> </li> <li>▪ External Plastering in all sides.</li> <li>▪ Fixing of Vertical Plumbing Line in Shafts               <ul style="list-style-type: none"> <li>a) Water supply pipe Lines (G.I).</li> <li>b) Sanitary Lines (PVC).</li> </ul> </li> <li>▪ Fixing of Bathroom Wall Tiles.</li> <li>▪ Laying Of Floor Tiles               <ul style="list-style-type: none"> <li>a) Ceramic Tiles in Bathroom</li> <li>b) Vitrified Tiles in Halls &amp; Bedrooms.</li> <li>c) Vitrified Tiles in Corridor.</li> </ul> </li> <li>▪ Fixing of UPVC Windows.</li> <li>▪ Fixing of UPVC French Door (without Mosquito mesh shutter)</li> </ul> </li> </ul>	



**PROGRESS REPORT**  
**CGEWHO – CHENNAI PHASE-III PROJECT**

C1 BLOCK	<ul style="list-style-type: none"> <li>▪ Fixing of Door Shutters 100% completed (1080/1080).</li> <li>▪ Kitchen Finishing Works               <ul style="list-style-type: none"> <li>a) Fixing of Wall Dados.</li> <li>b) Laying of Granite Countertop.</li> <li>c) Fixing of S.S Sink.</li> </ul> </li> <li>▪ Water Proofing Works.               <ul style="list-style-type: none"> <li>a) Terrace floor Water proofing.</li> <li>b) Over Head Water Tank.</li> </ul> </li> <li>▪ Laying of Green marble for Staircase 100% completed.</li> <li>▪ Electrical wire pulling work 100% completed (120/120).</li> <li>▪ Fixing of Modular Switches &amp; Sockets 100% completed. (120/120)</li> <li>▪ Fixing of M.S Window Safety Grills 100% completed.</li> <li>▪ Fixing of Balcony Handrail.</li> <li>▪ Fixing of Staircase Hand Rails.</li> <li>▪ Bathroom false ceiling work 100% completed (360 / 360).</li> <li>▪ Fixing of IWC 100% completed (120/120)</li> <li>▪ Fixing of EWC 100% completed (240/240)</li> <li>▪ Lift Cladding works 4 out of 4 100% completed.</li> <li>▪ Internal Painting               <ul style="list-style-type: none"> <li>a) 1<sup>st</sup> Coat – 100% completed (120/120)</li> </ul> </li> <li>▪ External Damp proof elasto painting completed.</li> <li>▪ Over Head Tank Ring Main Connection works completed.</li> <li>▪ Fixing of Door Hardware Fittings completed.</li> <li>▪ Fixing of Main Door Lock completed.</li> <li>▪ Plumbing shaft top covering completed.</li> <li>▪ Stilt Grano flooring works completed.</li> <li>▪ Electrical Panel &amp; Cable tray fixing works completed.</li> <li>▪ Construction of Earth Pit chambers completed.</li> </ul>	
	<b>WORKS ON PROGRESS</b>	<b>WORKS TO BE DONE</b>
	<ul style="list-style-type: none"> <li>▪ Lift Installation works 90% completed. ( 3 out 3 ).</li> <li>▪ Firefighting works 95% completed.</li> </ul>	<ul style="list-style-type: none"> <li>▪ Fixing of Wash basins.</li> <li>▪ Internal Painting 2<sup>nd</sup> Coating</li> <li>▪ Fixing of Plumbing CP fittings.</li> <li>▪ Lift Commissioning works.</li> <li>▪ Fixing of EB meters.</li> <li>▪ Fixing of Electrical fittings in common areas.</li> </ul>



**PROGRESS REPORT**  
**CGEWHO – CHENNAI PHASE-III PROJECT**

BLOCK	STATUS AS ON 31 <sup>st</sup> OCTOBER-2024
C2 BLOCK	<ul style="list-style-type: none"> <li>◆ <b>100% Completed Works</b> <ul style="list-style-type: none"> <li>▪ Terrace floor level slab R.C.C</li> <li>▪ Terrace floor Parapet Columns Concrete.</li> <li>▪ Lift Head room (4 out of 4) - Slab Concrete.</li> <li>▪ Over Head Water Tank                             <ul style="list-style-type: none"> <li>(a) Base Slab Concrete (3 out of 3)</li> <li>(b) Wall Concrete (3 out of 3)</li> <li>(c) Top Cover slab (3 out of 3 )</li> </ul> </li> <li>▪ Block work upto Tenth floor &amp; Parapet wall.</li> <li>▪ Ceiling Plastering upto Tenth floor.</li> <li>▪ Wall plastering upto Tenth floor.</li> <li>▪ 1<sup>st</sup> Coat Wall Putty upto Tenth floor.</li> <li>▪ 2<sup>nd</sup> Coat Wall Putty upto Tenth floor.</li> <li>▪ Fixing of Internal Plumbing Line                             <ul style="list-style-type: none"> <li>a) Water supply pipe Lines (CPVC).</li> <li>b) Sanitary Lines (PVC)</li> </ul> </li> <li>▪ External Plastering in all sides.</li> <li>▪ Fixing of Vertical Plumbing Line in Shafts                             <ul style="list-style-type: none"> <li>a) Water supply pipe Lines (G.I).</li> <li>b) Sanitary Lines (PVC).</li> </ul> </li> <li>▪ Fixing of Bathroom Wall Tiles.</li> <li>▪ Laying Of Floor Tiles                             <ul style="list-style-type: none"> <li>a) Ceramic Tiles in Bathroom</li> <li>b) Vitrified Tiles in Halls &amp; Bedrooms.</li> <li>c) Vitrified Tiles in Corridor.</li> </ul> </li> <li>▪ Fixing of UPVC Windows.</li> <li>▪ Fixing of UPVC French Door (without Mosquito mesh shutter)</li> <li>▪ Fixing of Door Shutters 100% completed (1080/1080).</li> <li>▪ Kitchen Finishing Works                             <ul style="list-style-type: none"> <li>a) Fixing of Wall Dados.</li> <li>b) Laying of Granite Countertop.</li> <li>c) Fixing of S.S Sink.</li> </ul> </li> <li>▪ Water Proofing Works.                             <ul style="list-style-type: none"> <li>a) Terrace floor Water proofing.</li> <li>b) Over Head Water Tank.</li> </ul> </li> <li>▪ Laying of Green marble for Staircase 100% completed.</li> <li>▪ Electrical wire pulling work 100% completed (120/120).</li> <li>▪ Fixing of Modular Switches &amp; Sockets 100% completed. (120/120)</li> </ul> </li> </ul>



**PROGRESS REPORT**  
**CGEWHO – CHENNAI PHASE-III PROJECT**

C2 BLOCK	<ul style="list-style-type: none"> <li>▪ Fixing of M.S Window Safety Grills 100% completed.</li> <li>▪ Fixing of Balcony Handrail.</li> <li>▪ Fixing of Staircase Hand Rails.</li> <li>▪ Bathroom false ceiling work 100% completed (360 / 360).</li> <li>▪ Fixing of IWC 100% completed (120/120)</li> <li>▪ Fixing of EWC 100% completed (240/240)</li> <li>▪ Lift Cladding works 4 out of 4 100% completed.</li> <li>▪ Internal Painting                             <ul style="list-style-type: none"> <li>a) 1<sup>st</sup> Coat – 100% completed (120/120)</li> </ul> </li> <li>▪ Over Head Tank Ring Main Connection works completed.</li> <li>▪ Fixing of Door Hardware Fittings completed.</li> <li>▪ Fixing of Main Door Lock completed.</li> <li>▪ Plumbing shaft top covering completed.</li> <li>▪ Stilt Grano flooring works completed.</li> <li>▪ Electrical Panel &amp; Cable tray fixing works completed.</li> <li>▪ Construction of Earth Pit chambers completed.</li> </ul>	
	<b>WORKS ON PROGRESS</b>	<b>WORKS TO BE DONE</b>
	<ul style="list-style-type: none"> <li>▪ Lift Installation works 90% completed. ( 3 out 3 ).</li> <li>▪ Firefighting works 95% completed.</li> </ul>	<ul style="list-style-type: none"> <li>▪ Fixing of Wash basins.</li> <li>▪ Internal Painting 2<sup>nd</sup> Coating</li> <li>▪ Fixing of Plumbing CP fittings.</li> <li>▪ Lift Commissioning works.</li> <li>▪ Fixing of EB meters.</li> <li>▪ Fixing of Electrical fittings in common areas.</li> </ul>
<b>BLOCK</b>	<b>STATUS AS ON 31<sup>st</sup> OCTOBER-2024</b>	
C3 BLOCK	<ul style="list-style-type: none"> <li>◆ <b>100% Completed Works</b> <ul style="list-style-type: none"> <li>▪ <b>Terrace floor level</b> slab R.C.C</li> <li>▪ Terrace floor Parapet Columns Concrete.</li> <li>▪ Lift Head room (4 out of 4) - Slab Concrete.</li> <li>▪ Over Head Water Tank                                     <ul style="list-style-type: none"> <li>(a) Base Slab Concrete (3 out of 3)</li> <li>(b) Wall Concrete (3 out of 3)</li> <li>(c) Top Cover slab (3 out of 3 )</li> </ul> </li> <li>▪ Block work upto Tenth floor &amp; Parapet wall.</li> <li>▪ Ceiling Plastering upto Tenth floor.</li> </ul> </li> </ul>	



**PROGRESS REPORT**  
**CGEWHO – CHENNAI PHASE-III PROJECT**

---

C3 BLOCK	<ul style="list-style-type: none"><li>▪ Wall plastering upto Tenth floor.</li><li>▪ 1<sup>st</sup> Coat Wall Putty upto Tenth floor.</li><li>▪ 2<sup>nd</sup> Coat Wall Putty upto Tenth floor.</li><li>▪ Fixing of Internal Plumbing Line<ul style="list-style-type: none"><li>a) Water supply pipe Lines (CPVC).</li><li>b) Sanitary Lines (PVC)</li></ul></li><li>▪ External Plastering in all sides.</li><li>▪ Fixing of Vertical Plumbing Line in Shafts<ul style="list-style-type: none"><li>a) Water supply pipe Lines (G.I).</li><li>b) Sanitary Lines (PVC).</li></ul></li><li>▪ Fixing of Bathroom Wall Tiles.</li><li>▪ Laying Of Floor Tiles<ul style="list-style-type: none"><li>a) Ceramic Tiles in Bathroom</li><li>b) Vitrified Tiles in Halls &amp; Bedrooms.</li><li>c) Vitrified Tiles in Corridor.</li></ul></li><li>▪ Fixing of UPVC Windows.</li><li>▪ Fixing of UPVC French Door (without Mosquito mesh shutter)</li><li>▪ Fixing of Door Shutters 100% completed (900/900).</li><li>▪ Kitchen Finishing Works<ul style="list-style-type: none"><li>a) Fixing of Wall Dados.</li><li>b) Laying of Granite Countertop.</li><li>c) Fixing of S.S Sink.</li></ul></li><li>▪ Water Proofing Works.<ul style="list-style-type: none"><li>a) Terrace floor Water proofing.</li><li>b) Over Head Water Tank.</li></ul></li><li>▪ Laying of Green marble for Staircase 100% completed.</li><li>▪ Electrical wire pulling work 100% completed (100/100).</li><li>▪ Fixing of Modular Switches &amp; Sockets 100% completed. (100/100)</li><li>▪ Fixing of M.S Window Safety Grills 100% completed.</li><li>▪ Fixing of Balcony Handrail.</li><li>▪ Fixing of Staircase Hand Rails.</li><li>▪ Bathroom false ceiling work 100% completed (300 / 300).</li><li>▪ Fixing of IWC 100% completed (100/100)</li><li>▪ Lift Cladding works 4 out of 4 100% completed.</li><li>▪ Internal Painting<ul style="list-style-type: none"><li>a) 1<sup>st</sup> Coat – 100% completed (120/120)</li></ul></li><li>▪ Over Head Tank Ring Main Connection works completed.</li><li>▪ Fixing of Door Hardware Fittings completed.</li><li>▪ Fixing of Main Door Lock completed.</li></ul>
----------	--



**PROGRESS REPORT**  
**CGEWHO – CHENNAI PHASE-III PROJECT**

C3 BLOCK	<ul style="list-style-type: none"> <li>▪ Plumbing shaft top covering completed.</li> <li>▪ Stilt Grano flooring works completed.</li> <li>▪ Electrical Panel &amp; Cable tray fixing works completed.</li> <li>▪ Construction of Earth Pit chambers completed.</li> </ul>	
	<b>WORKS ON PROGRESS</b>	<b>WORKS TO BE DONE</b>
	<ul style="list-style-type: none"> <li>▪ Lift Installation works               <ul style="list-style-type: none"> <li>a) 3 Lifts - 90% completed.</li> <li>b) 4<sup>th</sup> Lift - 85% completed.</li> </ul> </li> <li>▪ Fixing of EWC 90% completed (180/200)</li> <li>▪ Firefighting works 95% completed.</li> </ul>	<ul style="list-style-type: none"> <li>▪ Fixing of Wash basins.</li> <li>▪ Internal Painting 2<sup>nd</sup> Coating</li> <li>▪ Fixing of Plumbing CP fittings.</li> <li>▪ Lift Commissioning works.</li> <li>▪ Fixing of EB meters.</li> <li>▪ Fixing of Electrical fittings in common areas.</li> </ul>
<b>BLOCK</b>	<b>STATUS AS ON 31<sup>st</sup> OCTOBER-2024</b>	
D1 BLOCK	<ul style="list-style-type: none"> <li>◆ <b>100% Completed Works</b> <ul style="list-style-type: none"> <li>▪ Terrace floor level slab R.C.C</li> <li>▪ Terrace floor Parapet Columns Concrete.</li> <li>▪ Lift Head room (4 out of 4) - Slab Concrete.</li> <li>▪ Over Head Water Tank                   <ul style="list-style-type: none"> <li>(a) Base Slab Concrete (3 out of 3)</li> <li>(b) Wall Concrete (3 out of 3)</li> <li>(c) Top Cover slab (3 out of 3 )</li> </ul> </li> <li>▪ Block work upto Tenth floor &amp; Parapet wall.</li> <li>▪ Ceiling Plastering upto Tenth floor.</li> <li>▪ Wall plastering upto Tenth floor.</li> <li>▪ 1<sup>st</sup> Coat Wall Putty upto Tenth floor.</li> <li>▪ 2<sup>nd</sup> Coat Wall Putty upto Tenth floor.</li> <li>▪ Fixing of Internal Plumbing Line                   <ul style="list-style-type: none"> <li>a) Water supply pipe Lines (CPVC).</li> <li>b) Sanitary Lines (PVC)</li> </ul> </li> <li>▪ External Plastering in all sides.</li> <li>▪ Fixing of Vertical Plumbing Line in Shafts                   <ul style="list-style-type: none"> <li>a) Water supply pipe Lines (G.I).</li> <li>b) Sanitary Lines (PVC).</li> </ul> </li> <li>▪ Fixing of Bathroom Wall Tiles.</li> <li>▪ Laying Of Floor Tiles                   <ul style="list-style-type: none"> <li>a) Ceramic Tiles in Bathroom</li> <li>b) Vitrified Tiles in Halls &amp; Bedrooms.</li> </ul> </li> </ul> </li> </ul>	



**PROGRESS REPORT**  
**CGEWHO – CHENNAI PHASE-III PROJECT**

D1 BLOCK	<ul style="list-style-type: none"> <li>c) Vitrified Tiles in Corridor.</li> <li>▪ Fixing of UPVC Windows.</li> <li>▪ Fixing of UPVC French Door (without Mosquito mesh shutter)</li> <li>▪ Fixing of Door Shutters 100% completed (900/900).</li> <li>▪ Kitchen Finishing Works               <ul style="list-style-type: none"> <li>a) Fixing of Wall Dados.</li> <li>b) Laying of Granite Countertop.</li> <li>c) Fixing of S.S Sink.</li> </ul> </li> <li>▪ Water Proofing Works.               <ul style="list-style-type: none"> <li>a) Terrace floor Water proofing.</li> <li>b) Over Head Water Tank.</li> </ul> </li> <li>▪ Laying of Green marble for Staircase 100% completed.</li> <li>▪ Electrical wire pulling work 100% completed (80/80).</li> <li>▪ Fixing of Modular Switches &amp; Sockets 100% completed. (80/80)</li> <li>▪ Fixing of M.S Window Safety Grills 100% completed.</li> <li>▪ Fixing of Balcony Handrail.</li> <li>▪ Fixing of Staircase Hand Rails.</li> <li>▪ Bathroom false ceiling work 100% completed (320 / 320).</li> <li>▪ Fixing of IWC 100% completed (80/800)</li> <li>▪ Fixing of EWC 100% completed (240/240)</li> <li>▪ Lift Cladding works 4 out of 4 100% completed.</li> <li>▪ Internal Painting               <ul style="list-style-type: none"> <li>b) 1<sup>st</sup> Coat – 100% completed (80/80)</li> </ul> </li> <li>▪ Over Head Tank Ring Main Connection works completed.</li> <li>▪ Fixing of Door Hardware Fittings completed.</li> <li>▪ Fixing of Main Door Lock completed.</li> <li>▪ Stilt flooring works completed.</li> <li>▪ Electrical Panel &amp; Cable tray fixing works completed.</li> <li>▪ Construction of Earth Pit chambers completed.</li> <li>▪ Firefighting works completed. (Application for NOC submitted)</li> </ul>	
	<b>WORKS ON PROGRESS</b>	<b>WORKS TO BE DONE</b>
	<ul style="list-style-type: none"> <li>▪ Lift Installation works               <ul style="list-style-type: none"> <li>a) 3 Lifts - 90% completed.</li> <li>b) 4<sup>th</sup> Lift - 80% completed.</li> </ul> </li> </ul>	<ul style="list-style-type: none"> <li>▪ Fixing of Wash basins.</li> <li>▪ Internal Painting 2<sup>nd</sup> Coating</li> <li>▪ Fixing of Plumbing CP fittings.</li> <li>▪ Lift Commissioning works.</li> <li>▪ Fixing of EB meters.</li> </ul>



**PROGRESS REPORT**  
**CGEWHO – CHENNAI PHASE-III PROJECT**

		<ul style="list-style-type: none"> <li>▪ Fixing of Electrical fittings in common areas.</li> </ul>
<b>BLOCK</b>	<b>STATUS AS ON 31<sup>st</sup> OCTOBER-2024</b>	
D2 BLOCK	<ul style="list-style-type: none"> <li>◆ <b>100% Completed Works</b> <ul style="list-style-type: none"> <li>▪ <b>Terrace floor level</b> slab R.C.C</li> <li>▪ Terrace floor Parapet Columns Concrete.</li> <li>▪ Lift Head room (4 out of 4) - Slab Concrete.</li> <li>▪ Over Head Water Tank                             <ul style="list-style-type: none"> <li>(a) Base Slab Concrete (3 out of 3)</li> <li>(b) Wall Concrete (3 out of 3)</li> <li>(c) Top Cover slab (3 out of 3 )</li> </ul> </li> <li>▪ Block work upto Tenth floor &amp; Parapet wall.</li> <li>▪ Ceiling Plastering upto Tenth floor.</li> <li>▪ Wall plastering upto Tenth floor.</li> <li>▪ 1<sup>st</sup> Coat Wall Putty upto Tenth floor.</li> <li>▪ 2<sup>nd</sup> Coat Wall Putty upto Tenth floor.</li> <li>▪ Fixing of Internal Plumbing Line                             <ul style="list-style-type: none"> <li>a) Water supply pipe Lines (CPVC).</li> <li>b) Sanitary Lines (PVC)</li> </ul> </li> <li>▪ External Plastering in all sides.</li> <li>▪ Fixing of Vertical Plumbing Line in Shafts                             <ul style="list-style-type: none"> <li>a) Water supply pipe Lines (G.I).</li> <li>b) Sanitary Lines (PVC).</li> </ul> </li> <li>▪ Fixing of Bathroom Wall Tiles.</li> <li>▪ Laying Of Floor Tiles                             <ul style="list-style-type: none"> <li>a) Ceramic Tiles in Bathroom</li> <li>b) Vitrified Tiles in Halls &amp; Bedrooms.</li> <li>c) Vitrified Tiles in Corridor.</li> </ul> </li> <li>▪ Fixing of UPVC Windows.</li> <li>▪ Fixing of UPVC French Door (without Mosquito mesh shutter)</li> <li>▪ Fixing of Door Shutters 100% completed (900/900).</li> <li>▪ Kitchen Finishing Works                             <ul style="list-style-type: none"> <li>a) Fixing of Wall Dados.</li> <li>b) Laying of Granite Countertop.</li> <li>c) Fixing of S.S Sink.</li> </ul> </li> <li>▪ Water Proofing Works.                             <ul style="list-style-type: none"> <li>a) Terrace floor Water proofing.</li> <li>b) Over Head Water Tank.</li> </ul> </li> </ul> </li> </ul>	





**PROGRESS REPORT**  
**CGEWHO – CHENNAI PHASE-III PROJECT**

D2 BLOCK	<ul style="list-style-type: none"> <li>▪ Laying of Green marble for Staircase 100% completed.</li> <li>▪ Electrical wire pulling work 100% completed (80/80).</li> <li>▪ Fixing of Modular Switches &amp; Sockets 100% completed. (80/80)</li> <li>▪ Fixing of M.S Window Safety Grills 100% completed.</li> <li>▪ Fixing of Balcony Handrail.</li> <li>▪ Fixing of Staircase Hand Rails.</li> <li>▪ Bathroom false ceiling work 100% completed (320 / 320).</li> <li>▪ Fixing of IWC 100% completed (80/800)</li> <li>▪ Fixing of EWC 100% completed (240/240)</li> <li>▪ Fixing of Wash basins 100% completed (240/240)</li> <li>▪ Lift Erection works 4 out of 4 completed.</li> <li>▪ Lift Cladding works 4 out of 4 100% completed.</li> <li>▪ Internal Painting               <ul style="list-style-type: none"> <li>a) 1<sup>st</sup> Coat – 100% completed (80/80)</li> </ul> </li> <li>▪ Over Head Tank Ring Main Connection works completed.</li> <li>▪ Fixing of Door Hardware Fittings completed.</li> <li>▪ Fixing of Main Door Lock completed.</li> <li>▪ Stilt flooring works completed.</li> <li>▪ Lift Slow speed commissioning 4 out of 4 completed.</li> <li>▪ Electrical Panel &amp; Cable tray fixing works completed.</li> <li>▪ Construction of Earth Pit chambers completed.</li> <li>▪ Firefighting works completed. (Application for NOC submitted)</li> </ul>	
	<b>WORKS ON PROGRESS</b>	<b>WORKS TO BE DONE</b>
	<ul style="list-style-type: none"> <li>▪ Final snag list checking &amp; cleaning.</li> </ul>	<ul style="list-style-type: none"> <li>▪ Internal Painting 2<sup>nd</sup> Coating</li> <li>▪ Fixing of Plumbing CP fittings.</li> <li>▪ Lift Commissioning works (High Speed).</li> <li>▪ Fixing of EB meters.</li> <li>▪ Fixing of Electrical fittings in common areas.</li> </ul>



**PROGRESS REPORT**  
**CGEWHO – CHENNAI PHASE-III PROJECT**

BLOCK	STATUS AS ON 31 <sup>st</sup> OCTOBER-2024
D3 BLOCK	<ul style="list-style-type: none"> <li>◆ <b>100% Completed Works</b> <ul style="list-style-type: none"> <li>▪ Terrace floor level slab R.C.C</li> <li>▪ Terrace floor Parapet Columns Concrete.</li> <li>▪ Lift Head room (4 out of 4) - Slab Concrete.</li> <li>▪ Over Head Water Tank                             <ul style="list-style-type: none"> <li>(a) Base Slab Concrete (3 out of 3)</li> <li>(b) Wall Concrete (3 out of 3)</li> <li>(c) Top Cover slab (3 out of 3 )</li> </ul> </li> <li>▪ Block work upto Tenth floor &amp; Parapet wall.</li> <li>▪ Ceiling Plastering upto Tenth floor.</li> <li>▪ Wall plastering upto Tenth floor.</li> <li>▪ 1<sup>st</sup> Coat Wall Putty upto Tenth floor.</li> <li>▪ 2<sup>nd</sup> Coat Wall Putty upto Tenth floor.</li> <li>▪ Fixing of Internal Plumbing Line                             <ul style="list-style-type: none"> <li>a) Water supply pipe Lines (CPVC).</li> <li>b) Sanitary Lines (PVC)</li> </ul> </li> <li>▪ External Plastering in all sides.</li> <li>▪ Fixing of Vertical Plumbing Line in Shafts                             <ul style="list-style-type: none"> <li>a) Water supply pipe Lines (G.I).</li> <li>b) Sanitary Lines (PVC).</li> </ul> </li> <li>▪ Fixing of Bathroom Wall Tiles.</li> <li>▪ Laying Of Floor Tiles                             <ul style="list-style-type: none"> <li>a) Ceramic Tiles in Bathroom</li> <li>b) Vitrified Tiles in Halls &amp; Bedrooms.</li> <li>c) Vitrified Tiles in Corridor.</li> </ul> </li> <li>▪ Fixing of UPVC Windows.</li> <li>▪ Fixing of UPVC French Door (without Mosquito mesh shutter)</li> <li>▪ Fixing of Door Shutters 100% completed (900/900).</li> <li>▪ Kitchen Finishing Works                             <ul style="list-style-type: none"> <li>a) Fixing of Wall Dados.</li> <li>b) Laying of Granite Countertop.</li> <li>c) Fixing of S.S Sink.</li> </ul> </li> <li>▪ Water Proofing Works.                             <ul style="list-style-type: none"> <li>a) Terrace floor Water proofing.</li> <li>b) Over Head Water Tank.</li> </ul> </li> <li>▪ Laying of Green marble for Staircase 100% completed.</li> <li>▪ Electrical wire pulling work 100% completed (80/80).</li> <li>▪ Fixing of Modular Switches &amp; Sockets 100% completed. (80/80)</li> </ul> </li> </ul>



**PROGRESS REPORT**  
**CGEWHO – CHENNAI PHASE-III PROJECT**

---

D3 BLOCK	<ul style="list-style-type: none"> <li>▪ Fixing of M.S Window Safety Grills 100% completed.</li> <li>▪ Fixing of Balcony Handrail.</li> <li>▪ Fixing of Staircase Hand Rails.</li> <li>▪ Bathroom false ceiling work 100% completed (320 / 320).</li> <li>▪ Fixing of IWC 100% completed (80/800)</li> <li>▪ Fixing of EWC 100% completed (240/240)</li> <li>▪ Lift Cladding works 4 out of 4 100% completed.</li> <li>▪ Internal Painting               <ul style="list-style-type: none"> <li>a) 1<sup>st</sup> Coat – 100% completed (80/80)</li> </ul> </li> <li>▪ Over Head Tank Ring Main Connection works completed.</li> <li>▪ Fixing of Door Hardware Fittings completed.</li> <li>▪ Fixing of Main Door Lock completed.</li> <li>▪ Stilt flooring works completed.</li> <li>▪ Electrical Panel &amp; Cable tray fixing works completed.</li> <li>▪ Construction of Earth Pit chambers completed.</li> <li>▪ Firefighting works completed. (Application for NOC submitted)</li> </ul>	
	<b>WORKS ON PROGRESS</b>	<b>WORKS TO BE DONE</b>
	<ul style="list-style-type: none"> <li>▪ Lift Installation works               <ul style="list-style-type: none"> <li>a) 3 Lifts - 90% completed.</li> <li>b) 4<sup>th</sup> Lift - 85% completed.</li> </ul> </li> </ul>	<ul style="list-style-type: none"> <li>▪ Fixing of Wash basins.</li> <li>▪ Internal Painting 2<sup>nd</sup> Coating</li> <li>▪ Fixing of Plumbing CP fittings.</li> <li>▪ Lift Commissioning works.</li> <li>▪ Fixing of EB meters.</li> <li>▪ Fixing of Electrical fittings in common areas.</li> </ul>



**PROGRESS REPORT**  
**CGEWHO – CHENNAI PHASE-III PROJECT**

BLOCK	STATUS AS ON 31 <sup>st</sup> OCTOBER-2024
COMMUNITY HALL	<ul style="list-style-type: none"> <li>◆ <b>100% Completed Works</b> <ul style="list-style-type: none"> <li>▪ Terrace floor level slab R.C.C</li> <li>▪ Terrace floor Parapet Columns Concrete.</li> <li>▪ Lift Head room (2 out of 2) - Slab Concrete.</li> <li>▪ Over Head Water Tank                             <ul style="list-style-type: none"> <li>(a) Base Slab Concrete</li> <li>(b) Tank Wall Concrete</li> <li>(c) Top Cover slab Concrete.</li> </ul> </li> <li>▪ Block work upto Fourth floor &amp; Parapet wall.</li> <li>▪ Ceiling Plastering upto Fourth floor.</li> <li>▪ Wall plastering upto Fourth floor.</li> <li>▪ 1<sup>st</sup> Coat Wall Putty upto Fourth floor.</li> <li>▪ 2<sup>nd</sup> Coat Wall Putty upto Fourth floor.</li> <li>▪ Fixing of Balcony Handrail.</li> <li>▪ Fixing of Staircase Hand Rails</li> <li>▪ Fixing of Internal Plumbing Line                             <ul style="list-style-type: none"> <li>a) Water supply pipe Lines (CPVC).</li> <li>b) Sanitary Lines (PVC)</li> </ul> </li> <li>▪ Fixing of Vertical Plumbing Line in Shafts                             <ul style="list-style-type: none"> <li>a) Water supply pipe Lines (G.I).</li> <li>b) Sanitary Lines (PVC).</li> </ul> </li> <li>▪ Fixing of Bathroom Wall Tiles.</li> <li>▪ Laying Of Floor Tiles                             <ul style="list-style-type: none"> <li>a) Vitrified Floor Tiles in Main Hall &amp; other rooms</li> <li>b) Ceramic Floor Tiles in Bathrooms.</li> <li>c) Kota Stone in Staircase &amp; Lobby</li> </ul> </li> <li>▪ Fixing of UPVC Windows.</li> <li>▪ Fixing of Wooden flush Door for rooms.</li> <li>▪ Fixing of Fire Safety Door for Hall Main Entrance</li> <li>▪ External Plastering in all sides.</li> <li>▪ Water Proofing Works.                             <ul style="list-style-type: none"> <li>a) Terrace floor Water proofing.</li> <li>b) Over Head Water Tank.</li> </ul> </li> <li>▪ Lift Installation works 2 out 2 100% completed.</li> <li>▪ Lift Cladding works 2 out of 2 – 100% completed.</li> <li>▪ Application of Exterior Wall Primer.-100% completed.</li> <li>▪ External Damp proof elasto painting completed.</li> </ul> </li> </ul>



**PROGRESS REPORT**  
**CGEWHO – CHENNAI PHASE-III PROJECT**

	<b>WORKS ON PROGRESS</b>	<b>WORKS TO BE DONE</b>
COMMUNITY HALL	<ul style="list-style-type: none"> <li>▪ Lift commissioning works.               <ul style="list-style-type: none"> <li>a) Lift 1 - High Speed completed.</li> <li>b) Lift 2 - Slow Speed completed</li> </ul> </li> <li>▪ Firefighting works all completed. (Application for NOC submitted)</li> <li>▪ External painting final coat on progress.</li> </ul>	<ul style="list-style-type: none"> <li>▪ Fixing of Wash basins &amp; urinals</li> <li>▪ Internal Painting 2<sup>nd</sup> Coating.</li> <li>▪ Fixing of Plumbing CP fittings.</li> <li>▪ Lift -2 High speed Commissioning.</li> <li>▪ Fixing of EB meters.</li> <li>▪ Fixing of Electrical fittings in Hall, rooms &amp; common areas.</li> </ul>

	<b>STATUS AS ON 31<sup>st</sup> OCTOBER-2024</b>
EXTERNAL DEVELOPMENT WORKS	<ul style="list-style-type: none"> <li>➤ <b>Underground Sump-1 (Near B-Block)</b> <ul style="list-style-type: none"> <li>▪ Base Slab R.C.C 100% completed.</li> <li>▪ Sump Wall - R.C.C 100% completed.</li> <li>▪ Top slab R.C.C 100% completed.</li> <li>▪ Outer Wall Waterproof plastering – 100% completed.</li> <li>▪ Inner Wall Waterproof plastering – 100% completed.</li> <li>▪ Fixing of Ladder in Pump room completed.</li> </ul> </li> <li>➤ <b>Underground Sump-2 (Near D-Block)</b> <ul style="list-style-type: none"> <li>▪ Base Slab - R.C.C 100% completed.</li> <li>▪ Sump Wall - R.C.C 100% completed.</li> <li>▪ Top slab R.C.C 100% completed.</li> <li>▪ Outer Wall Waterproof plastering – 100% completed.</li> <li>▪ Inner Wall Waterproof plastering 100% completed.</li> <li>▪ Fixing of Ladder in Pump room completed.</li> <li>▪ Fixing &amp; installation of Pumps completed.</li> </ul> </li> <li>➤ <b>Sewage Treatment Plant-2 (Near D-Block)</b> <ul style="list-style-type: none"> <li>▪ Base slab – R.C.C 100% completed.</li> <li>▪ STP Wall – R.C.C 100% completed.</li> <li>▪ STP Top Slab – R.C.C 100% completed.</li> <li>▪ STP Pump Room completed.</li> <li>▪ Outer wall Waterproof plastering 100% completed.</li> <li>▪ Inner Wall Waterproof plastering 100% completed.</li> <li>▪ Installation of STP 90% completed.</li> </ul> </li> </ul>



**PROGRESS REPORT**  
**CGEWHO – CHENNAI PHASE-III PROJECT**

---

- **Sewage Treatment Plant-1 (Near C3-Block)**
  - Base slab RCC completed.
  - STP Wall Concrete 90% completed.
  - STP Top Slab Concrete 90% completed.
  - STP Pump room Top slab completed.
  - Pump room blockwork & plastering work on progress
  - Internal Waterproof plastering 25% completed.
  - STP components received.
- **Laying of External Sewer lines**
  - Type 'D' All Blocks – 100% completed.
  - Type 'C' All Blocks – 95% completed.
  - Type 'A' All Blocks – 95% completed.
  - B1 Block - 50% completed.
- **Laying of External Water Supply lines**
  - Type D All Blocks – 95% completed.
  - C1 Block – 95% completed
  - C2 Block – 95% completed.
  - C3 Block – 90% completed.
  - B1 Block – 30% completed.
  - A1 Block - 90% completed.
  - A2 Block – 90% completed.
- **Laying of Storm Water Drainage.**
  - Type D All Blocks – 95% completed.
  - C1 Block – 90% completed.
  - C2 Block – 90% completed.
  - C3 Block – 85% completed.
  - A1 Block – 85% completed.
  - A2 Block – 90% completed.
- **External Electrification works.**
  - Total 8 Nos Transformers received out of 10 Nos.
  - Type D All Blocks – Fixing of Pole structure for Transformers 100% completed. Fixing of Single poles 90% completed.
  - Type A,B & C – Fixing of Pole structure for Transformers 100% completed. Fixing of Single poles 90% completed.
  - Installation of Over Head Power line
    - a) In Type - D block & Community – 90% completed.
    - b) In Type – A, B & C Blocks – 85% completed.
- **Laying of Roads.**
  - Formation of Sub-Grade
    - a) Around Type D All Blocks – 95% completed.



# PROGRESS REPORT

## CGEWHO – CHENNAI PHASE-III PROJECT

---

	<ul style="list-style-type: none"><li>b) Around Type C1 Block – 85% completed.</li><li>c) Around Type C2 Block – 85% completed</li><li>d) Around Type C3 Block – 80% completed</li><li>e) Around Type A1 Block – 85% completed.</li><li>f) Around Type A2 Block – 90% completed.</li><li>g) Around Community Hall – 80% completed.</li><li>▪ Laying of Granular Sub Base<ul style="list-style-type: none"><li>a) Around Type D All Blocks – 85% completed.</li><li>b) Around Type C1 Block – 70% completed.</li><li>c) Around Type C2 Block – 70% completed</li><li>d) Around Type C3 Block – 50% completed</li><li>e) Around Type A1 Block – 50% completed.</li><li>f) Around Type A2 Block – 70% completed.</li></ul></li></ul>
--	---

### PHOTOGRAPHS OF WORK PROGRESS AS ON 31<sup>st</sup> OCTOBER 2024

**Community Hall:** Fire fighting- External Hydrant pipes connection works on progress. Preparation for final coat of External Painting as per New proposed colour pattern on progress.



# PROGRESS REPORT

## CGEWHO – CHENNAI PHASE-III PROJECT

---

**Block A1:** Firefighting cable connection works on progress .



**Block A2 :** Lift installation works & PCC around block on progress.





# PROGRESS REPORT

## CGEWHO – CHENNAI PHASE-III PROJECT

---

**Block B1:** Stilt floor PCC laying & grano flooring on progress ..



**Block B2 :** Bathroom false ceiling , Vitrified floor tiling work on progress.



# PROGRESS REPORT

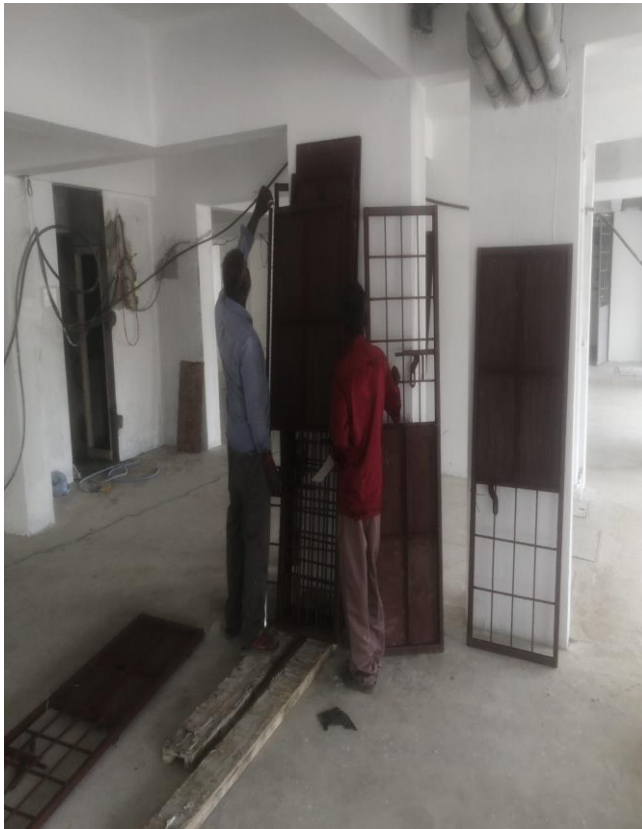
## CGEWHO – CHENNAI PHASE-III PROJECT

---

**Block C1:** Stilt Grano flooring Groove cutting on progress. Levelling of Earth around the blocks on progress.



**Block C2:** Fixing of Doors for Electrical Panel room. Levelling of Earth between the blocks on progress.



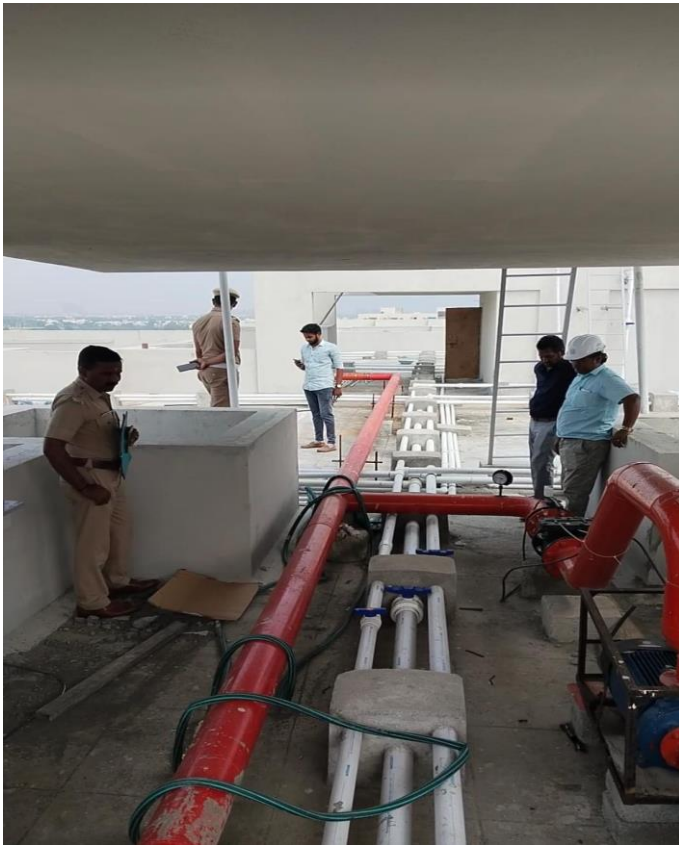
# PROGRESS REPORT

## CGEWHO – CHENNAI PHASE-III PROJECT

**Block C3:** Fire fighting Pump installation completed & Cabling work on progress.



**Block D1:** Fire fighting work - Testing & inspection done by Fire Department.



# PROGRESS REPORT

## CGEWHO – CHENNAI PHASE-III PROJECT

**Block D2:** Fire fighting work - Testing & inspection done by Fire Department. Fixing of Wash basins completed. Laying of PCC around the block on progress.



# PROGRESS REPORT

## CGEWHO – CHENNAI PHASE-III PROJECT

**Block D3:** Fire fighting work - Testing & inspection done by Fire Department.



**Sewage Treatment Plant 1 (Near C Block).** STP Pump room internal plastering completed & External plastering work on progress.



# PROGRESS REPORT

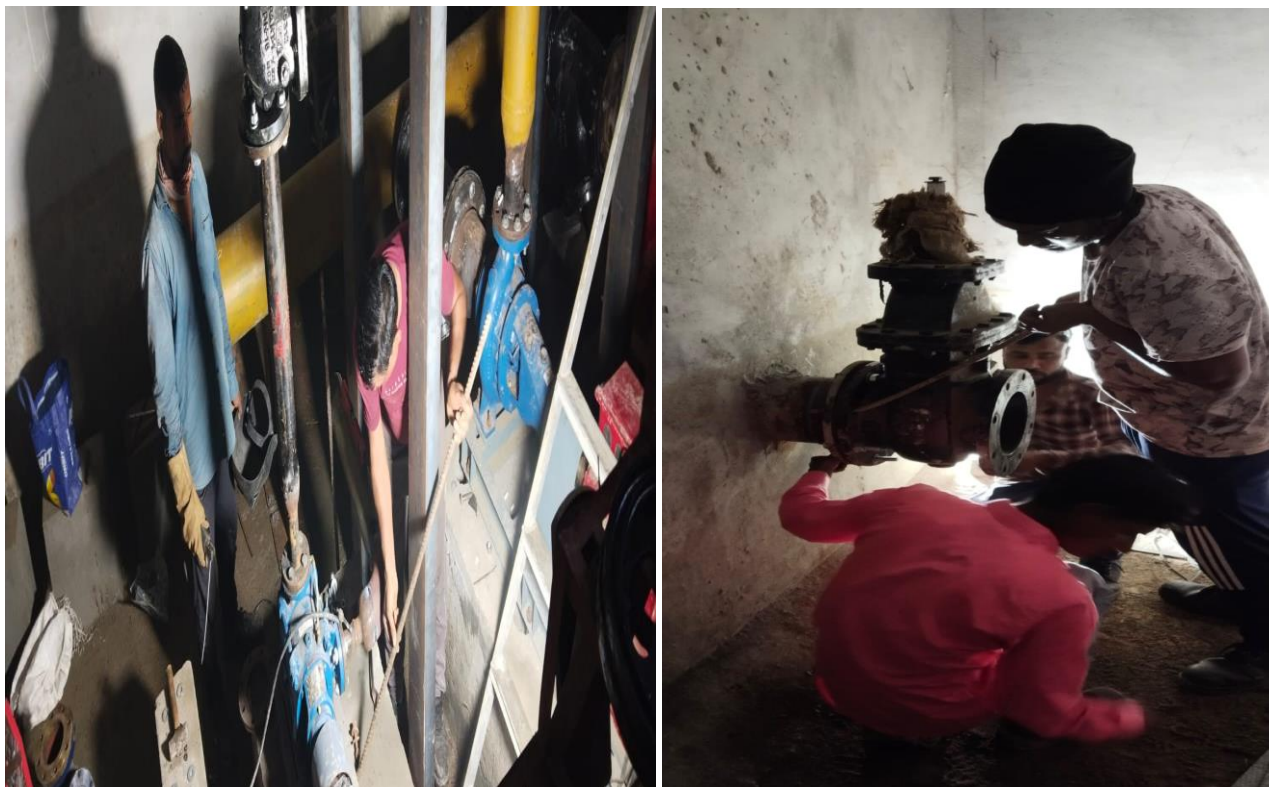
## CGEWHO – CHENNAI PHASE-III PROJECT

---

**Under Ground Sump 1 ( Opp to B1 Block). Installation of Pumps on progress.**



**Under Ground Sump 2 (Near D1 Block). Installation of Pumps in Sump on progress.**



# PROGRESS REPORT

## CGEWHO – CHENNAI PHASE-III PROJECT

---

**External Electrification Works :** Installation of Over Head Power cables near Community hall on progress

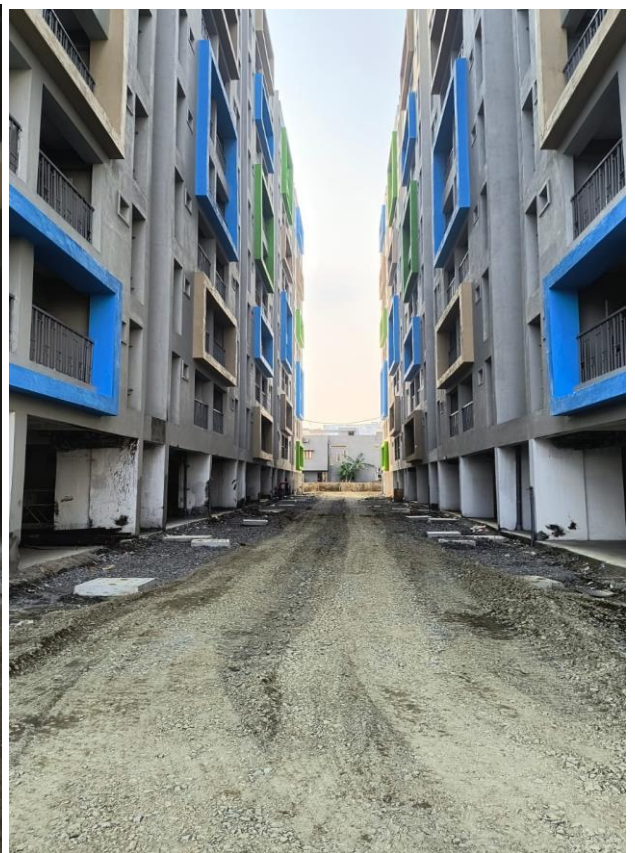


# PROGRESS REPORT

## CGEWHO – CHENNAI PHASE-III PROJECT

---

**Road Works :** Formation of Subgrade & Laying of Granular Sub-base around C1, C2, C3 A1 & A2 blocks & Rolling on progress.





# PROGRESS REPORT CGEWHO – CHENNAI PHASE-III PROJECT

---

## NDT TESTING IN B2 BLOCK



**PROGRESS REPORT**  
**CGEWHO – CHENNAI PHASE-III PROJECT**

---

**QUALITY CONTROL**

**DURING CONSTRUCTION FOLLOWING QUALITY CONTROL TESTS CONDUCTED AT SITE:**

Sl.No.	Materials	Source from	Test Done	Result
1	M-Sand	Arcot (T.K), Ranipet (Dist) Walajabad(T.K), Kanchipuram (Dt)	Each Truck	Sieve Analysis & Silt content
2.	P- Sand	Uthiramerur, Kanchipuram (DT) Walajabad(T.K), Kanchipuram (Dt)	Each Truck	Sieve Analysis & Silt content
2	Coarse Aggregate (20mm)	Sriperambathur, Kanchipuram (Dt), Vellore Dt & Chittoor Dt.	Each Truck	Sieve Analysis
3	Coarse Aggregate (12mm)	Sriperambathur, Kanchipuram (Dt) Vellore Dt & Chittoor Dt.	Each Truck	Sieve Analysis
4	Cement	Third party testing is being done.		
5	Steel	Third party testing is being done.		
6	Pile Integrity	Third party testing is being done.		
7	Soil Compaction	Third party testing is being done.		
8	RCC cubes are being tested and Register is being maintained.			
9	Slump test conducted at site to insure workability of concrete.			