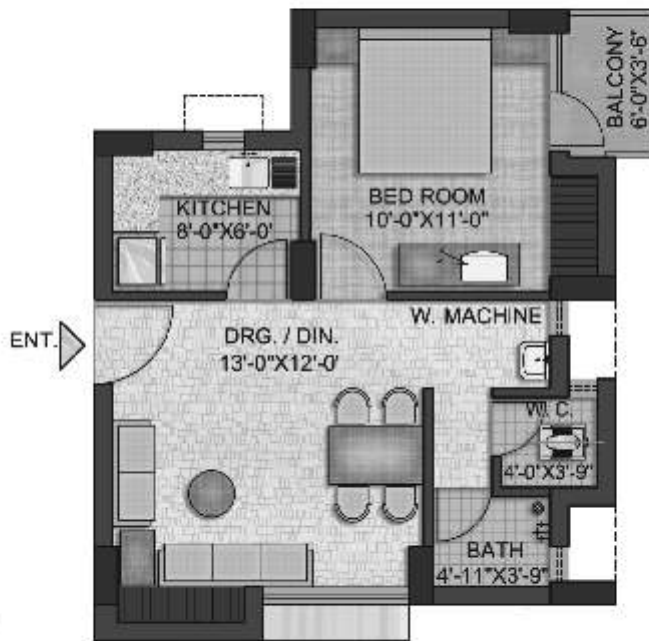




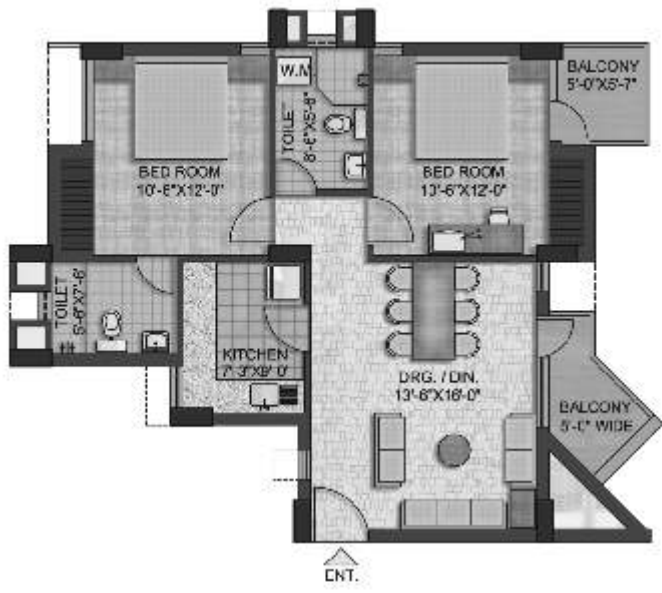
TYPICAL CLUSTER

Gr. + 9 configuration
 Total no. of flats = 42
 Av. built up area of each flat = 580 sq.ft.



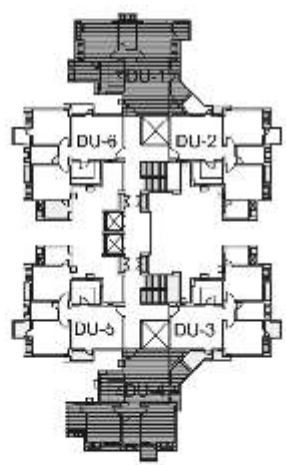
TYPICAL UNIT

TYPE - A



TYPICAL UNIT TYPE - I

TYPE - B



TYPICAL UNIT TYPE - II

TYPICAL UNIT TYPE - I
 Gr.+13 Configuration
 Total No. flats = 204
 Av. built up area of each flat = 1005 sq.ft.

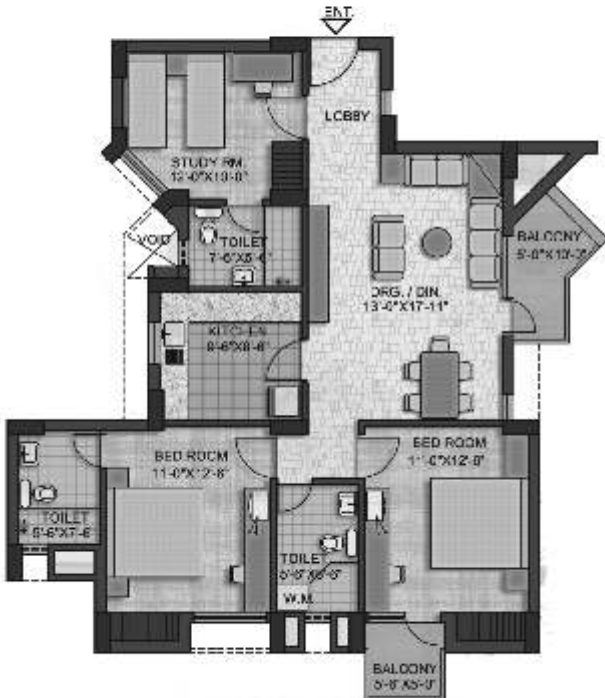
TYPE - B



TYPICAL UNIT TYPE-I



TYPICAL UNIT TYPE-II



TYPICAL UNIT TYPE-II

Gr + 9 & Gr. + 12 configuration
 Total No. of DUs. 160
 Av. built up area of each flat = 1367 sq.ft.

TYPE - C

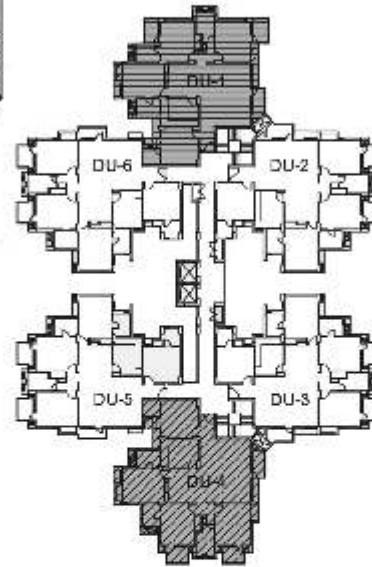


TYPICAL UNIT TYPE-I



TYPICAL UNIT TYPE-II

TYPE - D



TYPICAL CLUSTER

Gr + 9 & Gr. + 13 configuration
 Total No. of DUs. 250
 Av. built up area of each flat = 1973 sq.ft.

TYPE - D